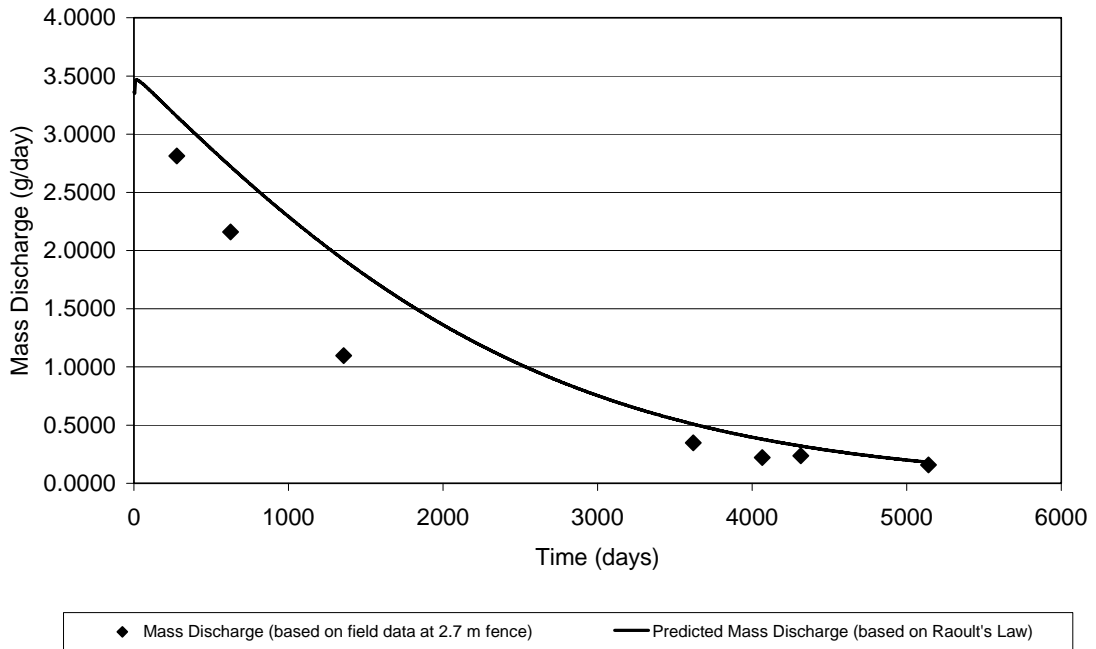


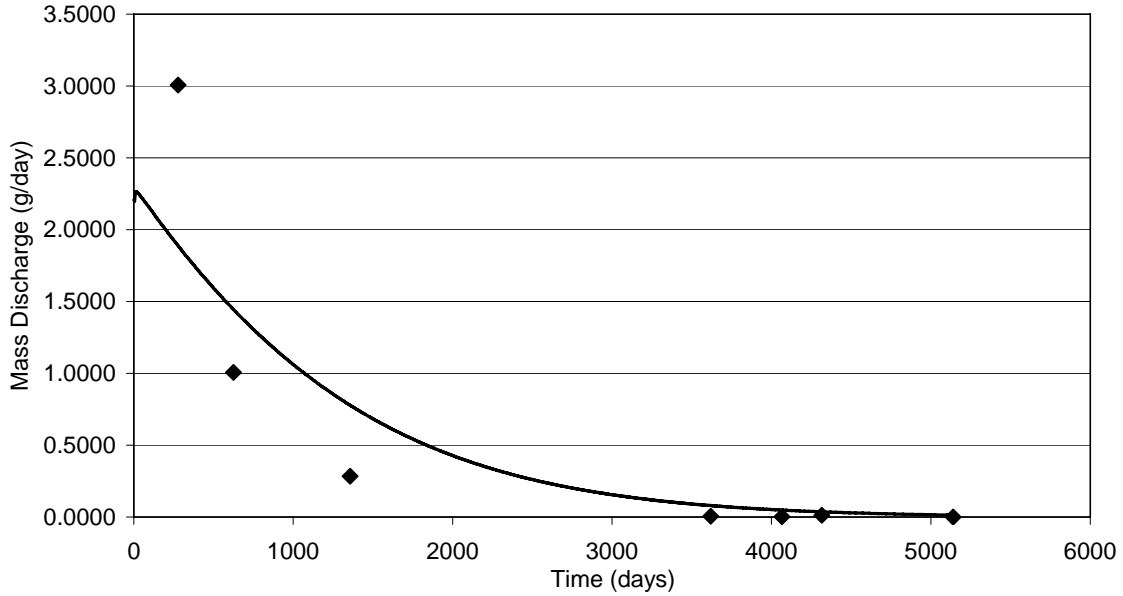
Mass Flux of Naphthalene
 Predicted and Experimental Calculations



Naphthalene

Distance From Source (m)	Day	Mass Discharge	g/day
2.85	278	Row 3	2.8124
2.85	626	Row 3	2.1605
2.85	1357	Row 3	1.0979
2.85	3619	Row 3	0.3471
2.85	4065	Row 3	0.2217
2.85	4315	Row 3	0.2357
2.85	5140	Row 3	0.1590

Mass Flux of Xylenes
 Predicted and Experimental Calculations

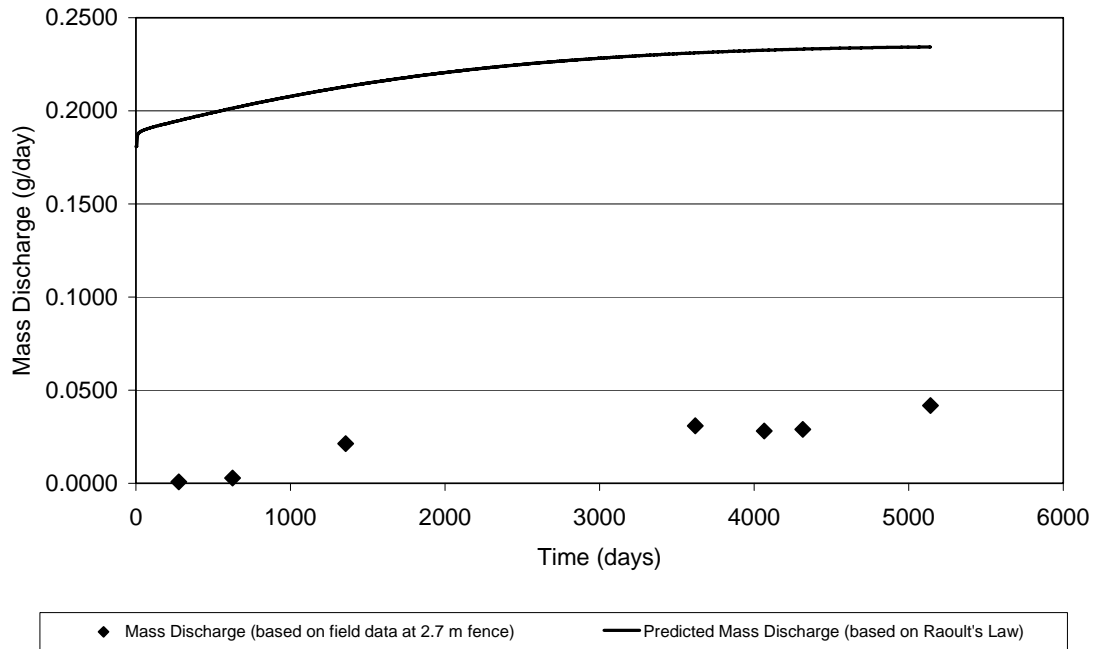


◆ Mass Discharge (based on field data at 2.7 m fence) — Predicted Mass Discharge (based on Raoult's Law)

Xylenes

Distance From Source (m)	Day	Mass Discharge	g/day
2.85	278	Row 3	3.0068
2.85	626	Row 3	1.0072
2.85	1357	Row 3	0.2844
2.85	3619	Row 3	0.0050
2.85	4065	Row 3	0.0033
2.85	4315	Row 3	0.0134
2.85	5140	Row 3	0.0000

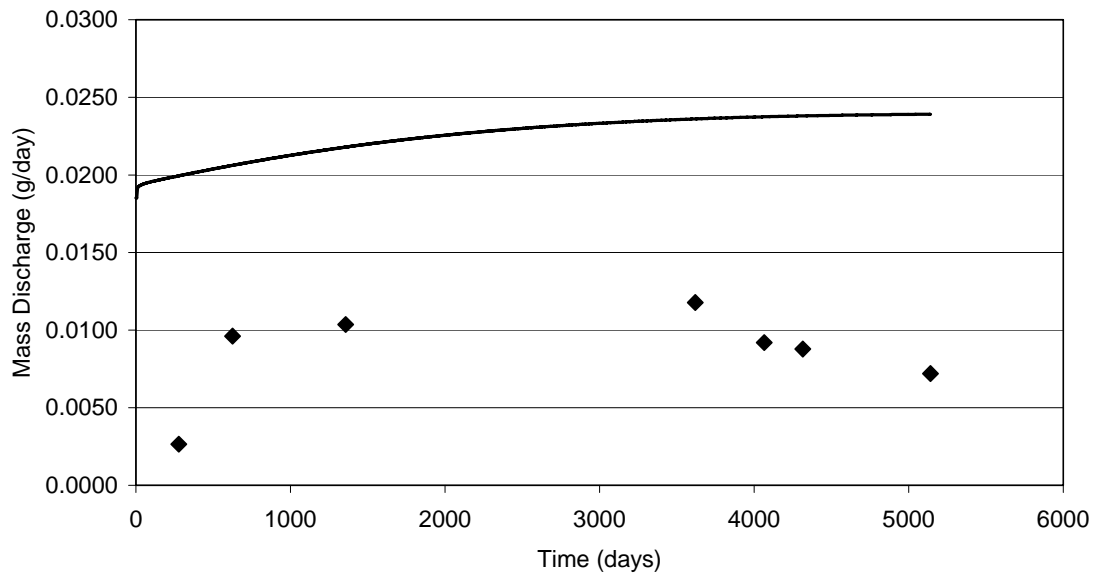
Mass Flux of Phenanthrene
 Predicted and Experimental Calculations



Phenanthrene

Distance From Source (m)	Day	Mass Discharge	g/day
2.85	278	Row 3	0.0007
2.85	626	Row 3	0.0028
2.85	1357	Row 3	0.0213
2.85	3619	Row 3	0.0309
2.85	4065	Row 3	0.0280
2.85	4315	Row 3	0.0289
2.85	5140	Row 3	0.0418

Mass Flux of Anthracene
Predicted and Experimental Calculations

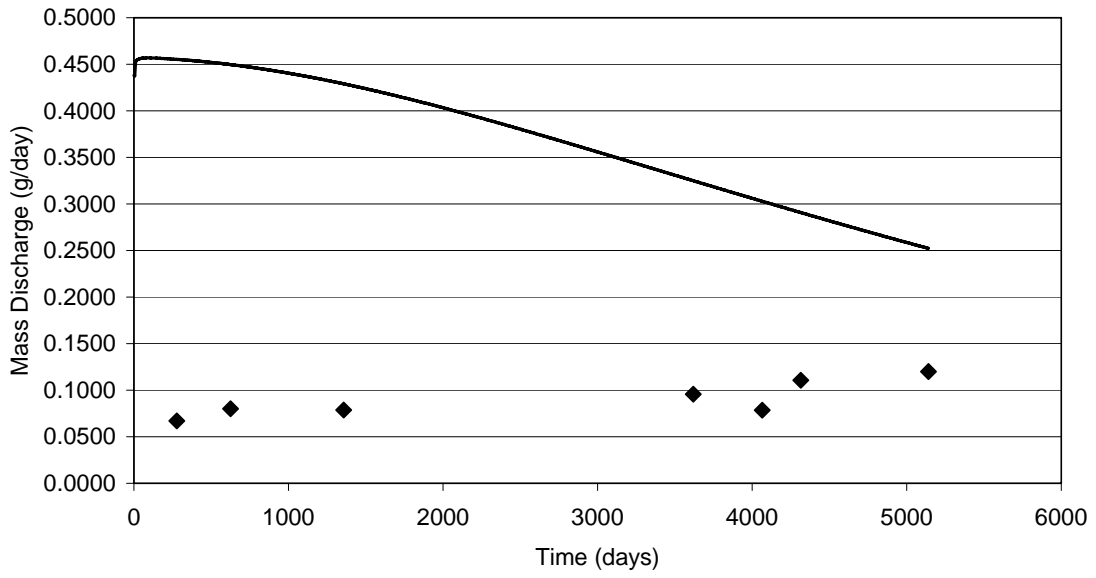


◆ Mass Discharge (based on field data at 2.7 m fence) — Predicted Mass Discharge (based on Raoult's Law)

Anthracene

Distance From Source (m)	Day	Mass Discharge	g/day
2.85	278	Row 3	0.0026
2.85	626	Row 3	0.0096
2.85	1357	Row 3	0.0104
2.85	3619	Row 3	0.0118
2.85	4065	Row 3	0.0092
2.85	4315	Row 3	0.0088
2.85	5140	Row 3	0.0072

Mass Flux of Dibenzofuran
Predicted and Experimental Calculations

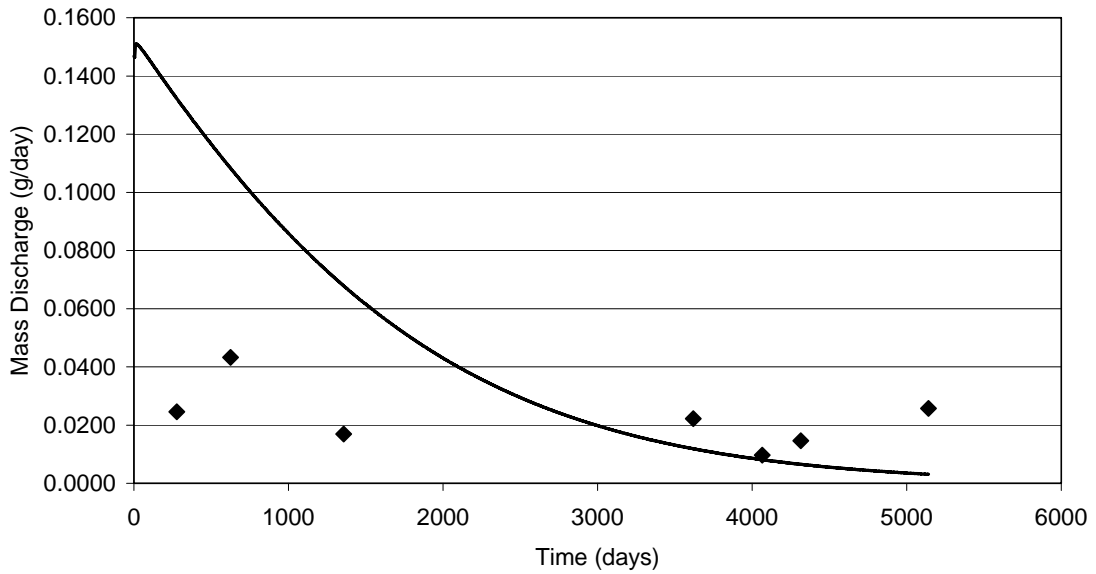


◆ Mass Discharge (based on field data at 2.7 m fence) — Predicted Mass Discharge (based on Raoult's Law)

Dibenzofuran

Distance From Source (m)	Day	Mass Discharge	g/day
2.85	278	Row 3	0.0669
2.85	626	Row 3	0.0799
2.85	1357	Row 3	0.0786
2.85	3619	Row 3	0.0957
2.85	4065	Row 3	0.0785
2.85	4315	Row 3	0.1106
2.85	5140	Row 3	0.1200

Mass Flux of Carbazole
Predicted and Experimental Calculations

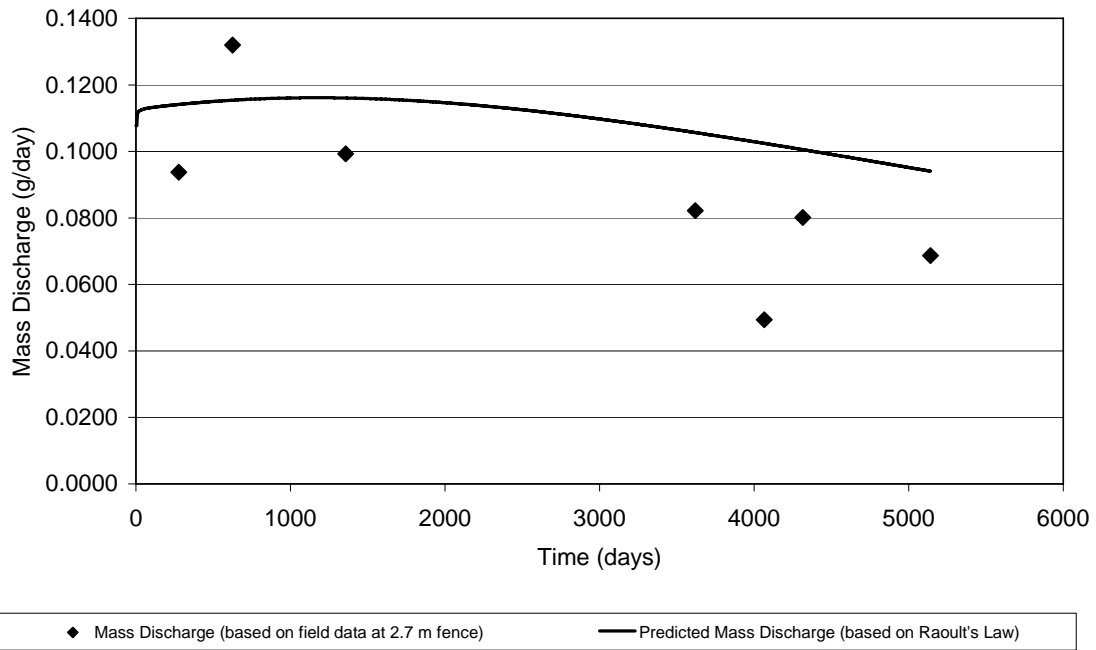


◆ Mass Discharge (based on field data at 2.7 m fence) — Predicted Mass Discharge (based on Raoult's Law)

Carbazole

Distance From Source (m)	Day	Mass Discharge	g/day
2.85	278	Row 3	0.0246
2.85	626	Row 3	0.0433
2.85	1357	Row 3	0.0169
2.85	3619	Row 3	0.0222
2.85	4065	Row 3	0.0097
2.85	4315	Row 3	0.0146
2.85	5140	Row 3	0.0258

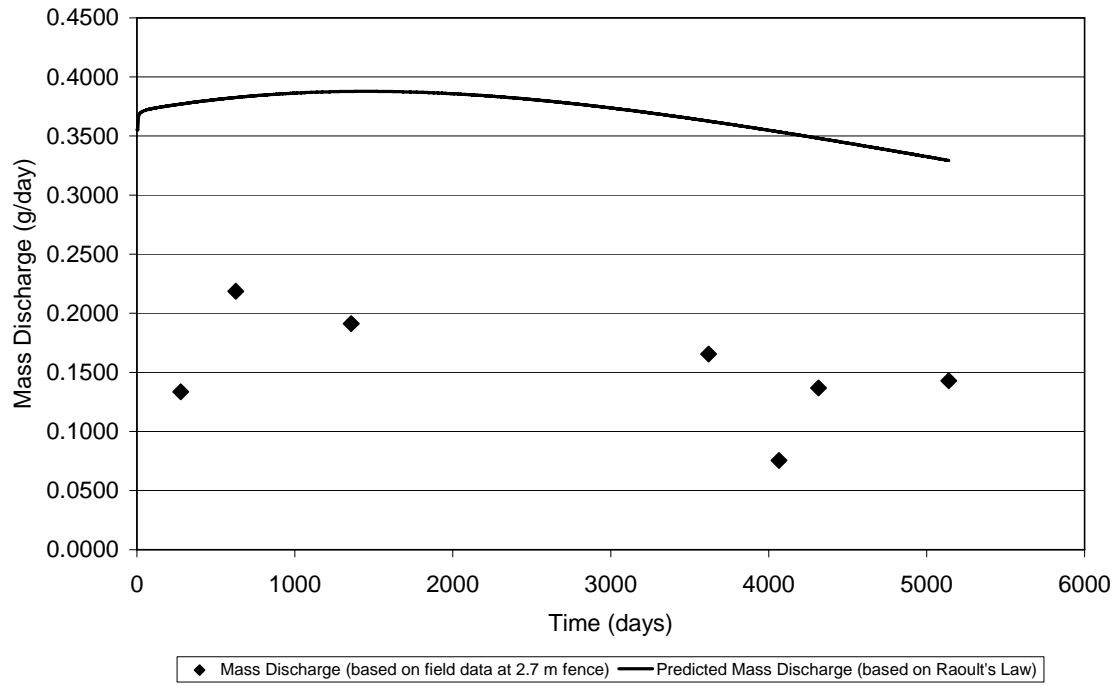
Mass Flux of 1-Methyl Naphthalene
 Predicted and Experimental Calculations



1-Methyl Naphthalene

Distance From Source (m)	Day	Mass Discharge	g/day
2.85	278	Row 3	0.0937
2.85	626	Row 3	0.1319
2.85	1357	Row 3	0.0993
2.85	3619	Row 3	0.0822
2.85	4065	Row 3	0.0494
2.85	4315	Row 3	0.0801
2.85	5140	Row 3	0.0687

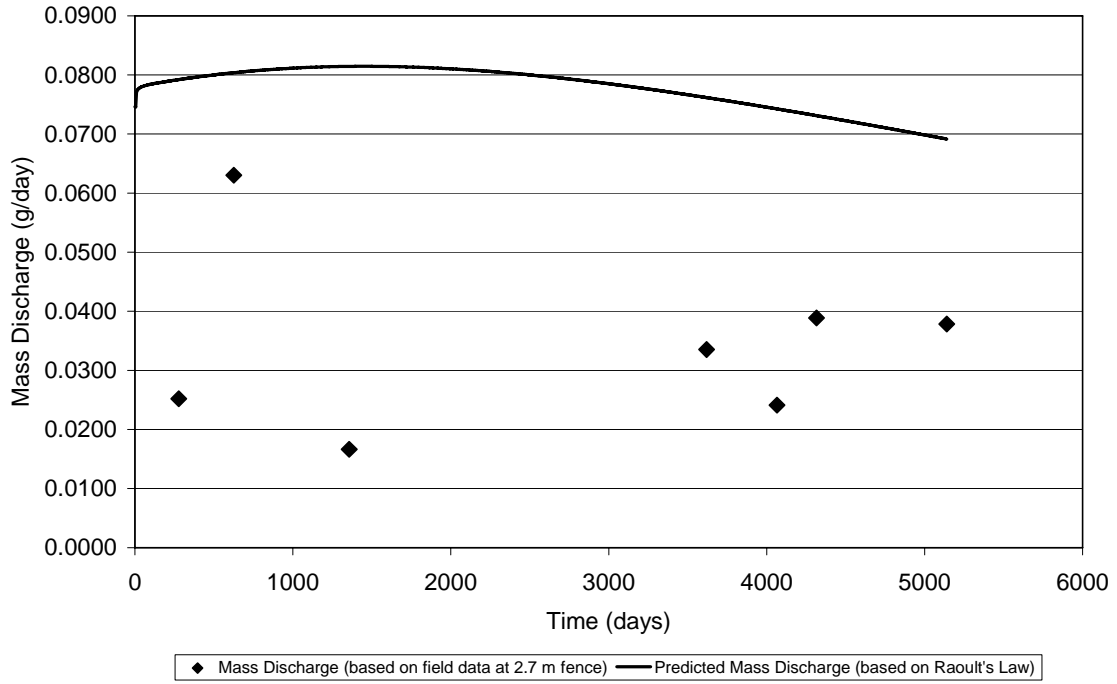
Mass Flux of Acenaphthene Predicted and Experimental Calculations



Acenaphthene

Distance From Source (m)	Day	Mass Discharge	g/day
2.85	278	Row 3	0.1335
2.85	626	Row 3	0.2187
2.85	1357	Row 3	0.1912
2.85	3619	Row 3	0.1656
2.85	4065	Row 3	0.0755
2.85	4315	Row 3	0.1368
2.85	5140	Row 3	0.1430

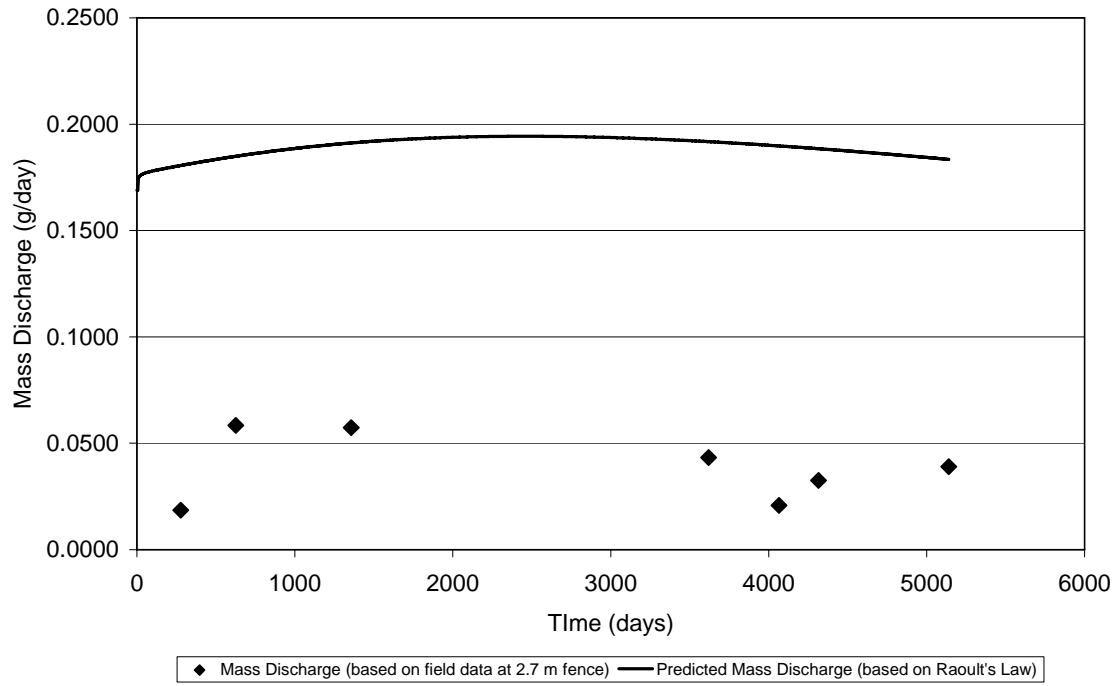
Mass Flux of Biphenyl Predicted and Experimental Calculations



Biphenyl

Distance From Source (m)	Day	Mass Discharge	g/day
2.85	278	Row 3	0.0252
2.85	626	Row 3	0.0630
2.85	1357	Row 3	0.0166
2.85	3619	Row 3	0.0335
2.85	4065	Row 3	0.0241
2.85	4315	Row 3	0.0389
2.85	5140	Row 3	0.0378

Mass Flux of Fluorene Predicted and Experimental Calculations



Fluorene

Distance From Source (m)	Day	Mass Discharge	g/day
2.85	278	Row 3	0.0185
2.85	626	Row 3	0.0584
2.85	1357	Row 3	0.0574
2.85	3619	Row 3	0.0433
2.85	4065	Row 3	0.0208
2.85	4315	Row 3	0.0326
2.85	5140	Row 3	0.0390